

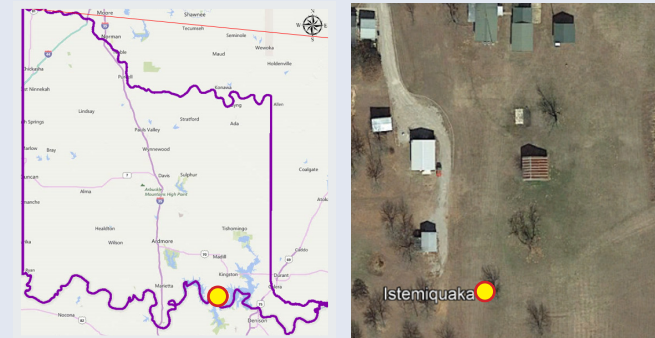
# FINDING ANSWERS AND ANCESTRY FROM A LONE HEADSTONE

The Cemetery Preservation Program (CPP) provides cleanup, identification and documentation of abandoned Chickasaw family cemeteries within the Chickasaw Nation boundaries. In this example, two photographs of a headstone and a location were sent to the CPP office in hopes of uncovering more information. This storyboard documents the steps that were followed to determine the identity and lineage of the person partially named on the headstone.



## STEP 1

Determined the headstone's physical location and interpreted the photograph. The headstone is located roughly 8 miles southwest of Kingston, Oklahoma, in Marshall County.

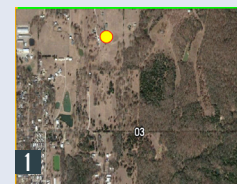


Map layers provided by the Chickasaw Nation GeoSpatial Information (GSI) Department.

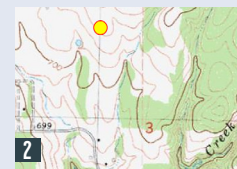
The maps show the Chickasaw Nation's 13½ county boundary (purple outline within the state of Oklahoma) and the location of the headstone (yellow dot).

## STEP 2

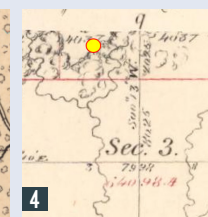
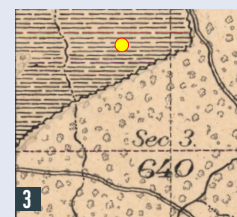
Determined legal description (SW ¼ NE ¼ NW ¼ Sec. 3, T8S, R5E, I.M.) of the headstone based on its physical location (represented by yellow dots). The various maps below were used to determine if any additional information was available.



**Image 1:** Public land survey data layer using January 2017 imagery from Google Earth Pro.



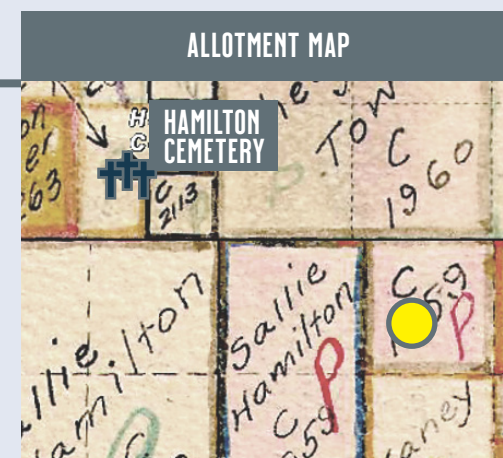
**Image 2:** 1982 Shay, Oklahoma 24K topographic map from the United States Geological Survey (USGS).



**Image 3 and 4:** 1871 and 1899 survey maps (respectively) from the Bureau of Land Management General Land Office Records and the Chickasaw Nation GSI Department.

## STEP 3

Checked the headstone location on the allotment map for the original allottee (Sallie Hamilton, Chickasaw, Dawes enrollment No. 1959). One of Sallie's daughters (Pheby) and granddaughter (Maggie) have allotted land to the north of the headstone location (yellow dot). The blue tri-cross symbol shows the nearest cemetery (Hamilton Cemetery) where Sallie's daughter, Icy; Icy's husband, Amos Henry Colbert; and Pheby's husband, Jim Townsley are buried. See family lineage in Step 6 for more details.



Allotment map provided by the Chickasaw Nation GSI Department.

## STEP 4

Used the roll number from the allotment map and the Oklahoma Historical Society's database to obtain the census card number for Sallie Hamilton.

Name:	Sallie Hamilton
Gender:	Female
Age:	50
Father Name:	Sha-pe-OK-ke
Mother Name:	Stem-MA-ko-ke
Census Card Number:	663
Dawes Enrollment Number:	1959
Tribes:	Chickasaw
Enrollment Category:	By Blood

Sallie's census card number outlined in red.

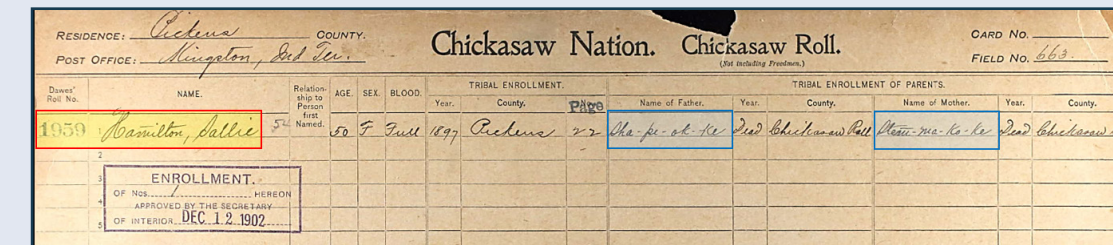
### OKLAHOMA HISTORICAL SOCIETY'S DATABASE

The card shows Sallie Hamilton's parents outlined in blue listed as Sha-pe-OK-ke (father) and Stem-MA-ko-ke (mother).

Name	Age	Sex	Blood	Card No.	Tribes	Roll No.
Aura Sawney	9	Female	Full	Card #694	Cherokee by Blood	Roll #1959
Clyde Wolfe	2	Male	Full	Card #1791	Cherokee by Blood (Minors)	Roll #1959
Dewey Alberty	4	Male	Full	Card #801	Cherokee Freedmen	Roll #1959
Sallie Hamilton	54	Female	Full	Card #663	Chickasaw by Blood	Roll #1959
Ran Cook	4	Male	Full	Card #480	Chickasaw Freedmen	Roll #1959
Charles J. Taylor	48	Male	Full	Card #783	Choctaw by Blood	Roll #1959
Zach Dunford	51	Male	Full	Card #909	Choctaw Freedmen	Roll #1959

## STEP 5

Verified the parental information using the digital files from the Ancestry and Fold3 websites provided by the National Archives.



The top portion of the census card 663 shows Sallie Hamilton outlined in red and her parents outlined in blue.

## STEP 6

Established Sallie Hamilton's family history (her mother and father are outlined in yellow) from a lone headstone and confirmed Chickasaw lineage for the CPP's approval for preservation and maintenance.

