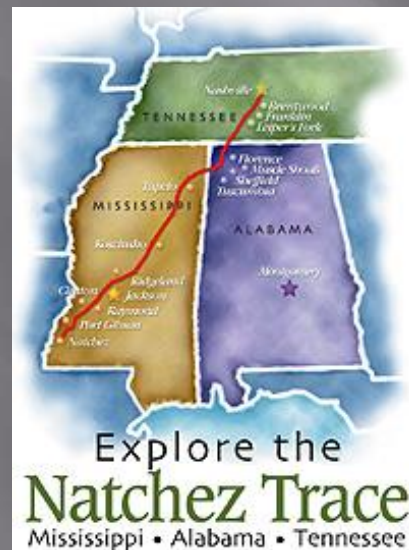


A BRIEF HISTORY OF THE NATCHEZ TRACE IN CHICKASAW TERRITORY



Intro



Natchez Trace as a Prehistoric Trading Path



Natchez Trace as a Prehistoric Trading Path



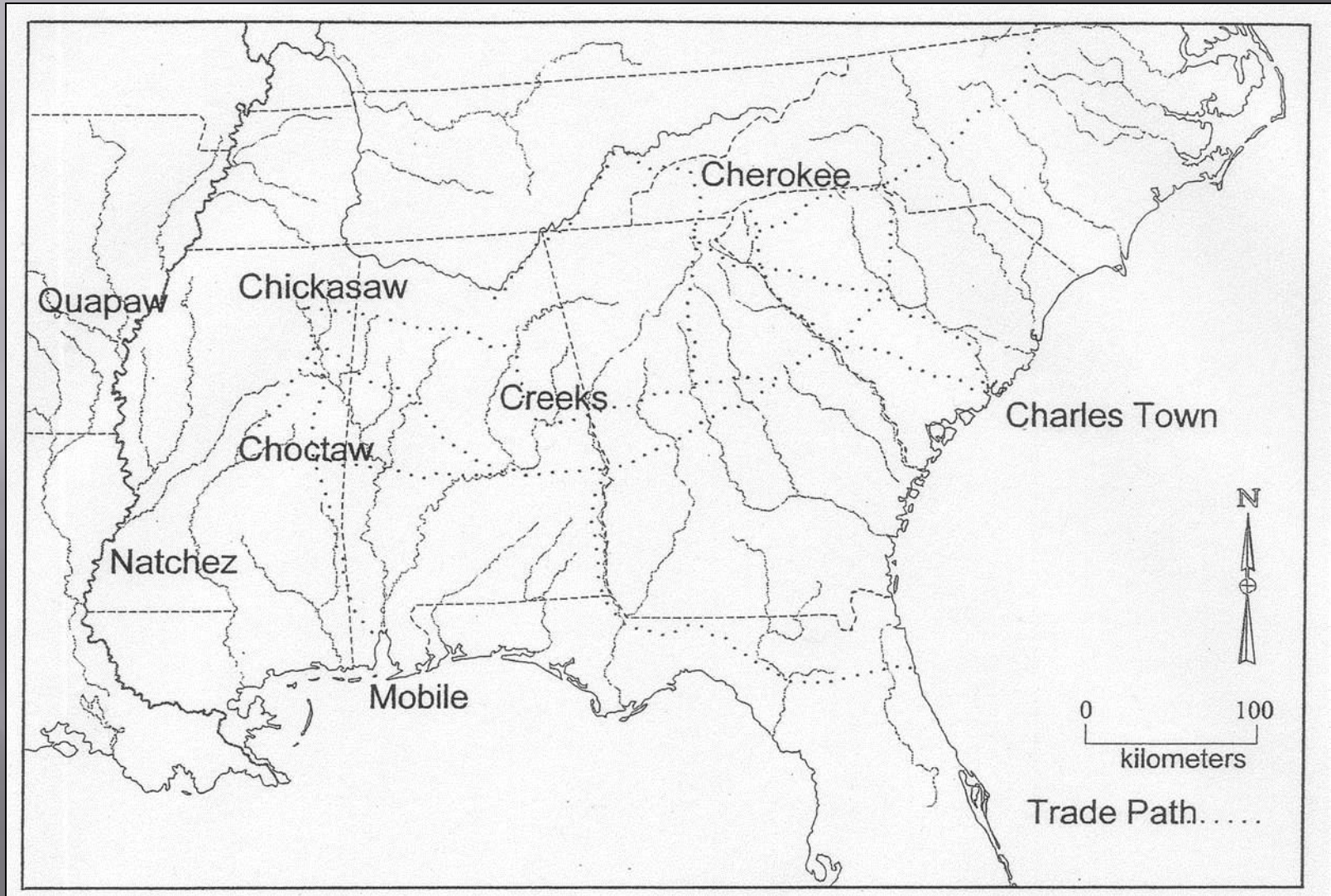
Pharr Mounds

Natchez Trace as a Prehistoric Trading Path

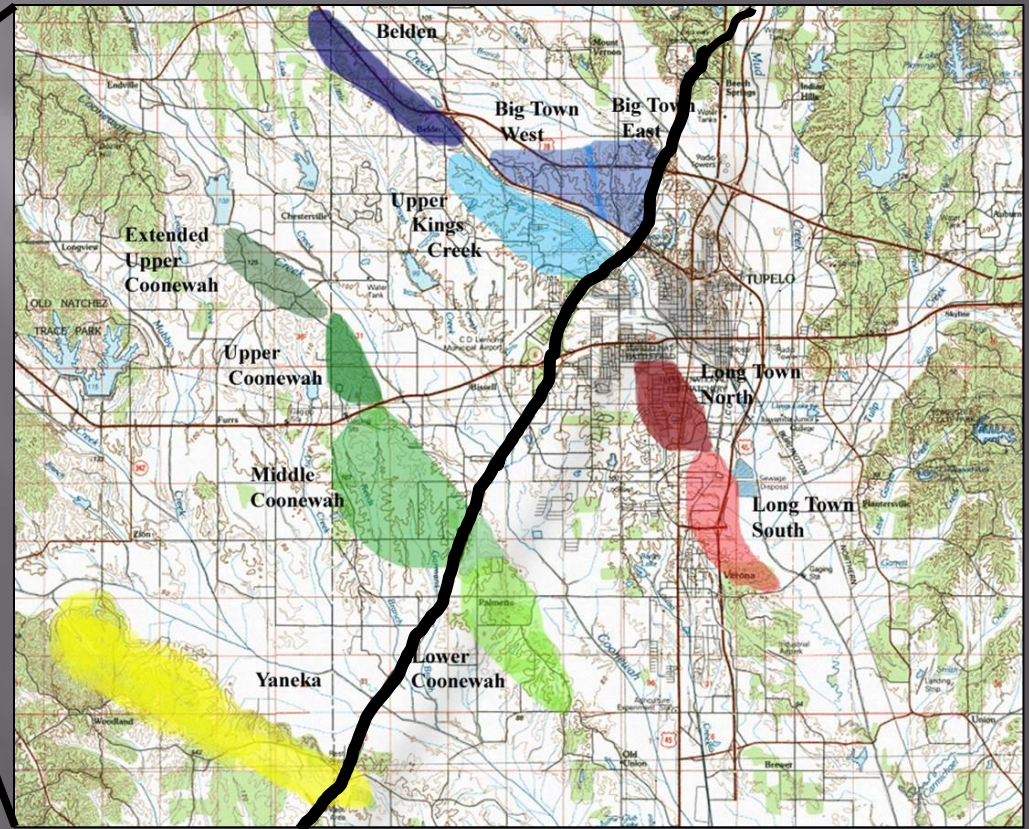
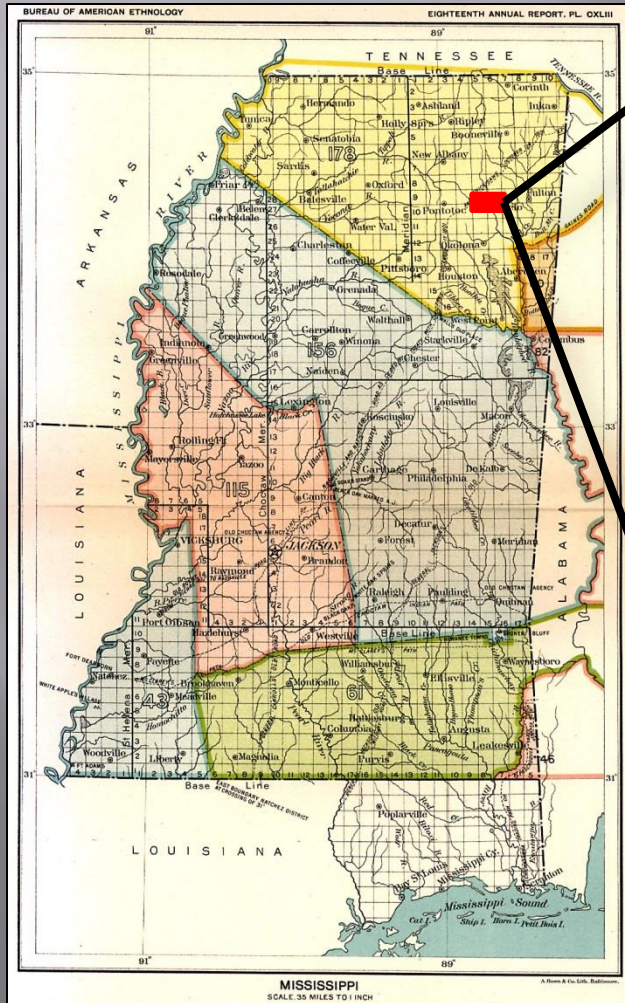


Bear Creek Mound

Major Tribes of the Southeast



The Natchez Trace in the Heart of Chickasaw Territory



The Natchez Trace running through the heartland of Chickasaw Territory

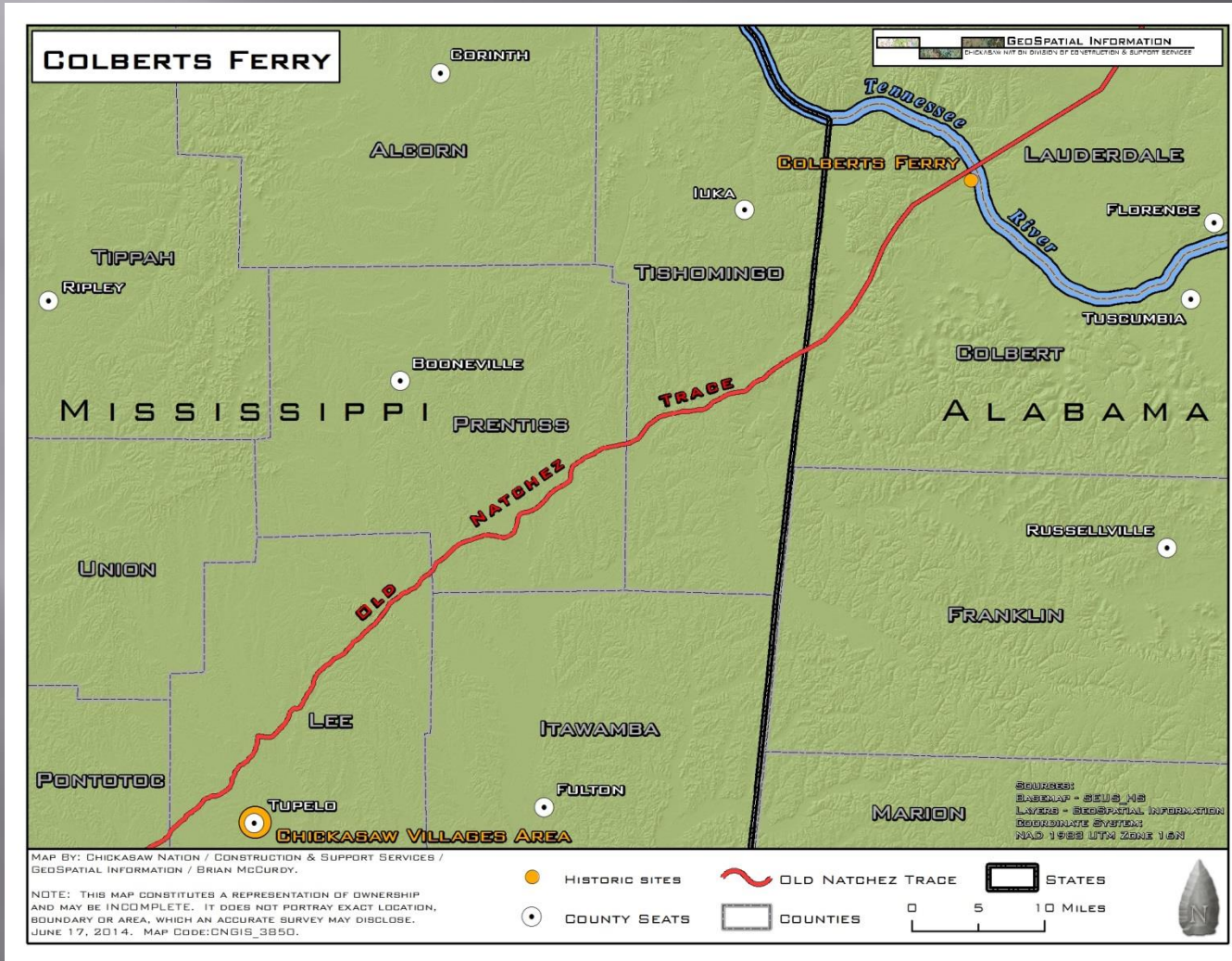
Kaintucks



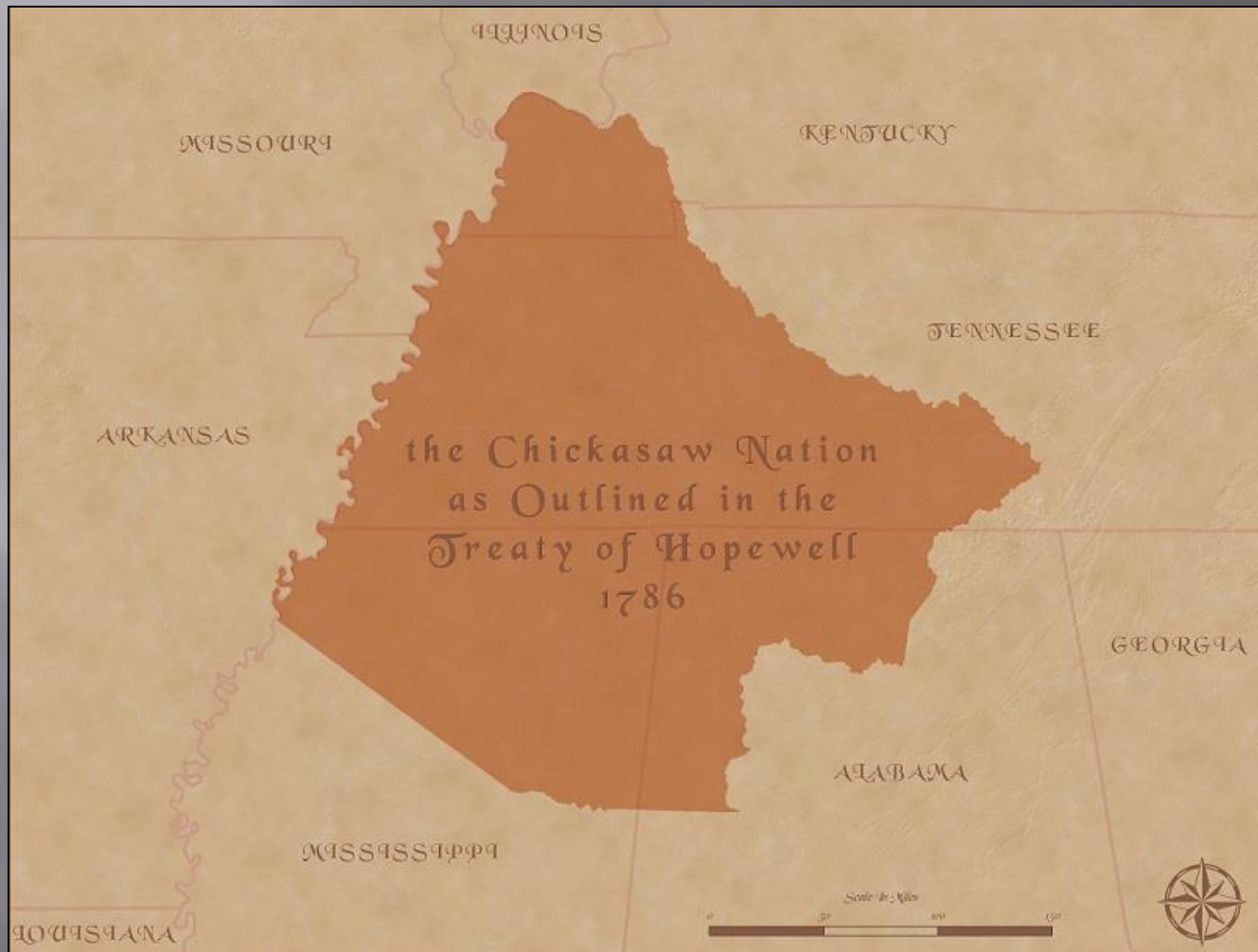
Routes of the Kaintucks



Colbert's Ferry



The Natchez Trace in the Heart of Chickasaw Territory



George Colbert



George Colbert



Colbert's Stand in the early 1900s

Colbert's Ferry



War of 1812



James Robertson
(Chickasaw Agent)

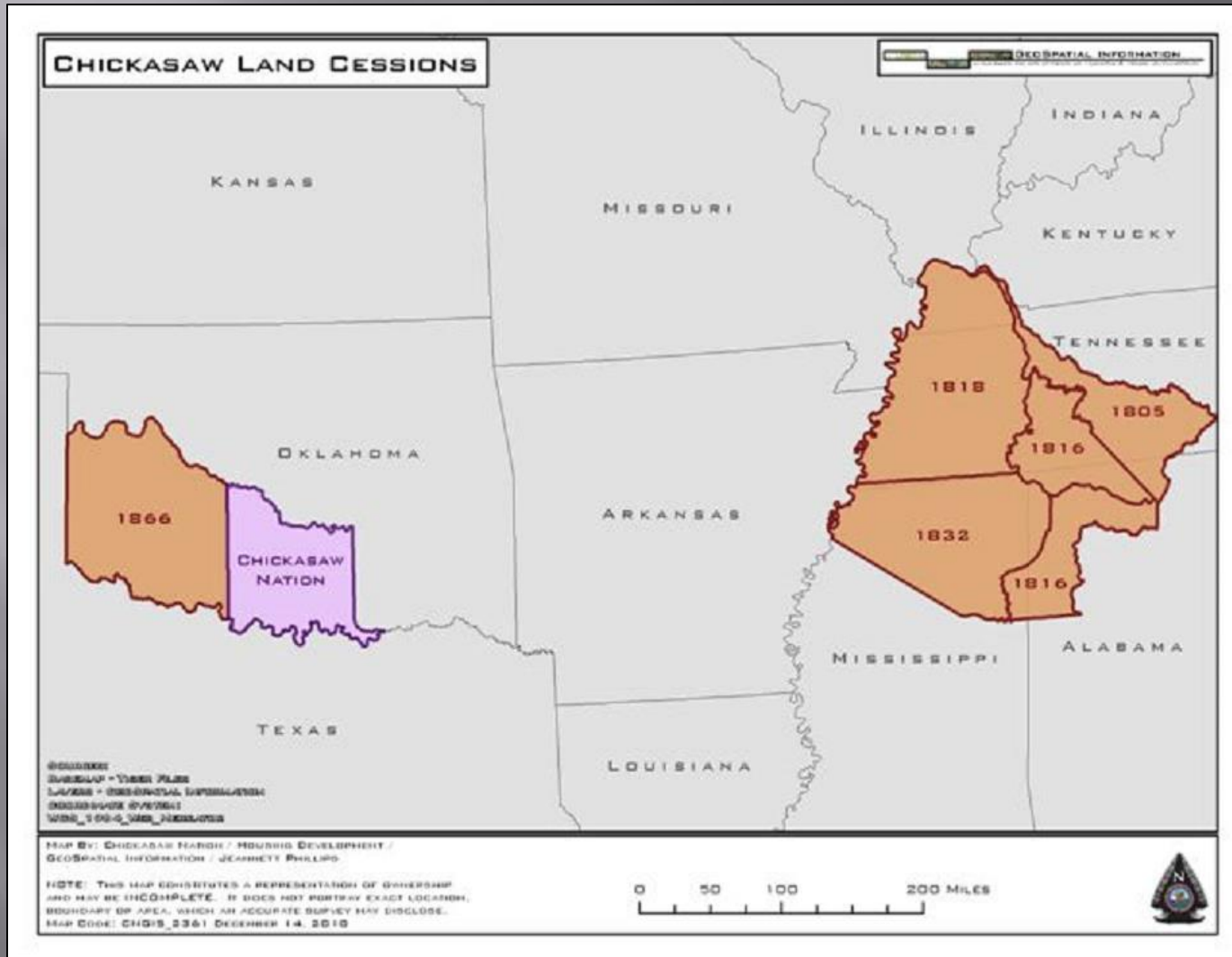


Andrew Jackson

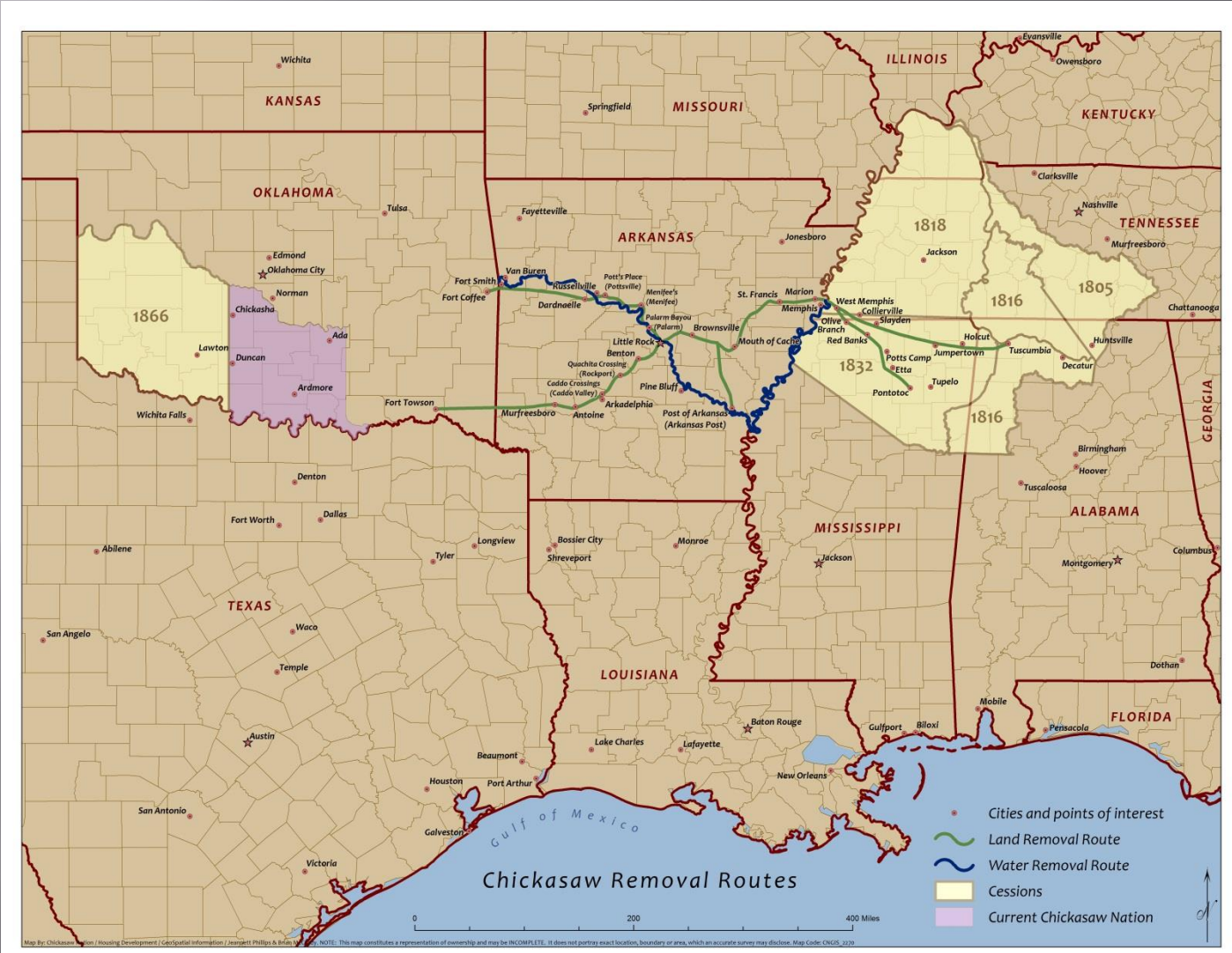


War of 1812 soldiers

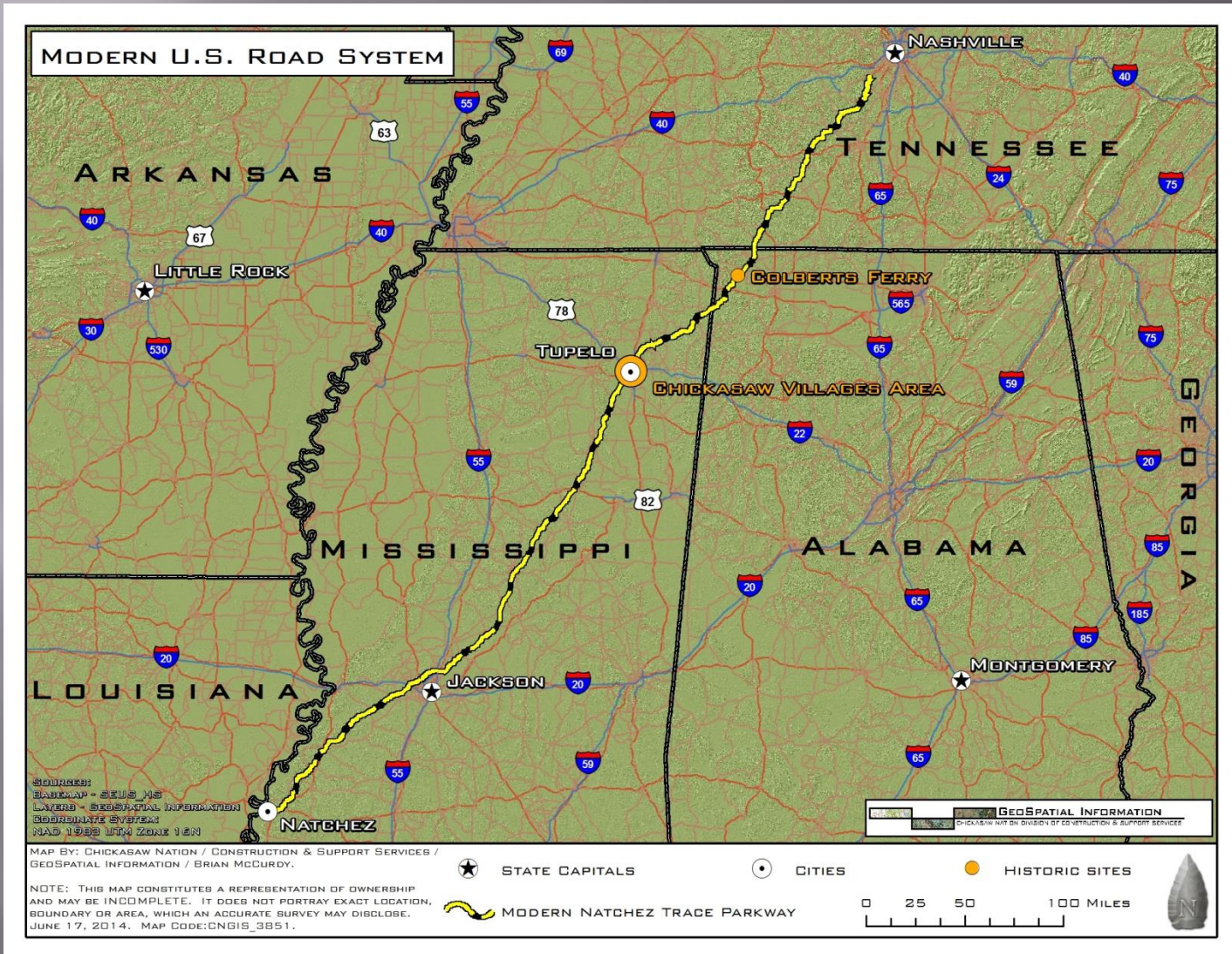
Chickasaw Treaties



Chickasaw Removal Routes



The Region Today



So many roads!

The End

